

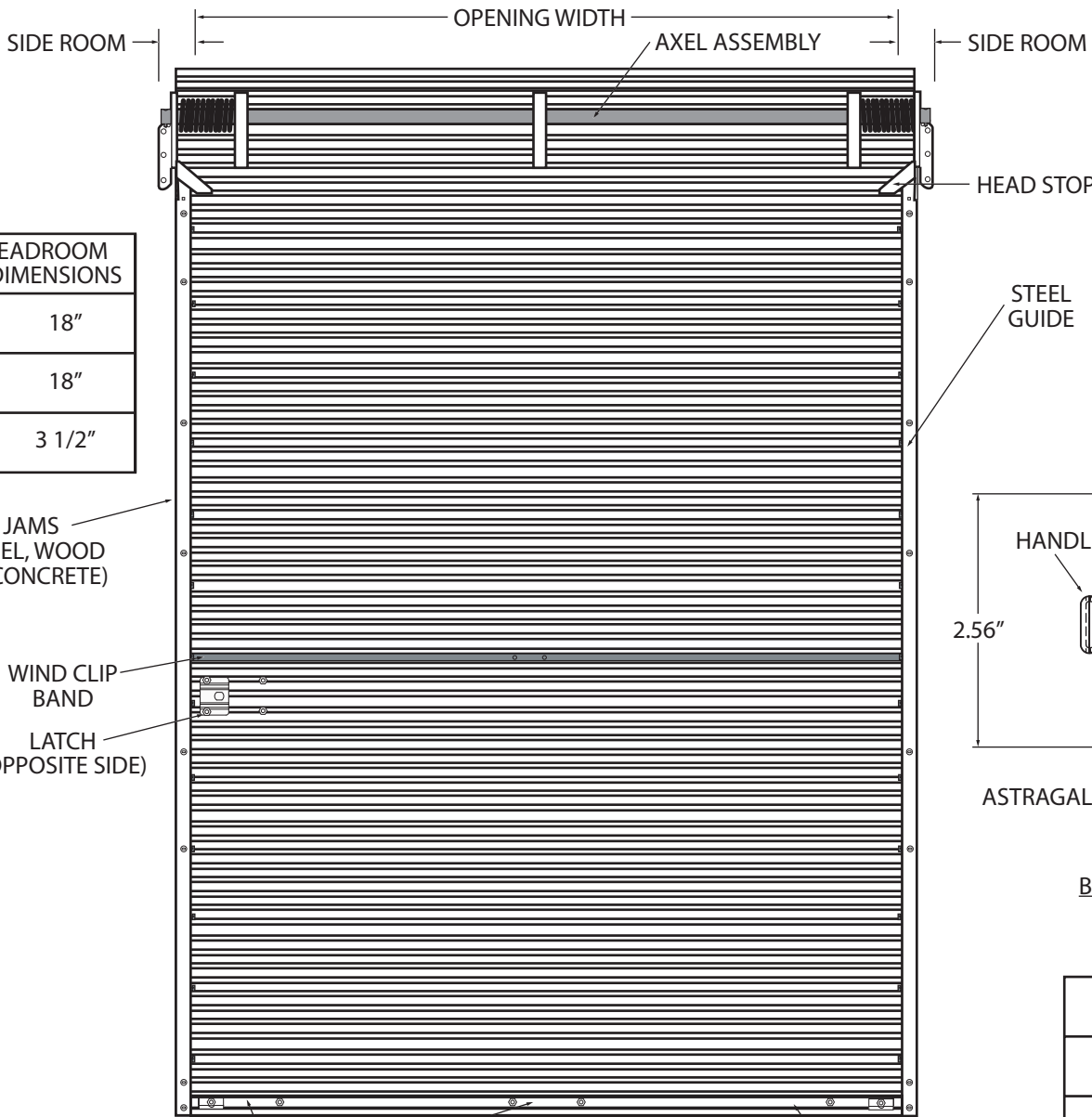
| MINIMUM HEADROOM CLEARANCE DIMENSIONS | |
|---------------------------------------|--------|
| VERTICAL HEADROOM | 18" |
| HORIZONTAL HEADROOM | 18" |
| SIDE ROOM | 3 1/2" |

10'0" MAX WALL OPENING HEIGHT (CLEAR OPENING)

JAMS (STEEL, WOOD OR CONCRETE)

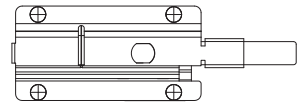
WIND CLIP BAND

LATCH (OPPOSITE SIDE)

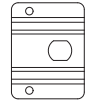


WIND LOAD CERTIFIED UP TO 8'-4" OPENING WIDTH

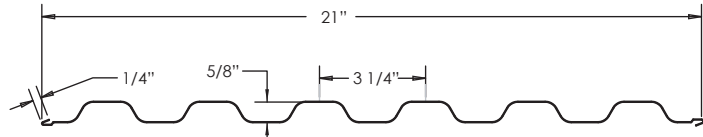
BOTTOM BAR ASSEMBLY



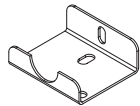
OUTSIDE DOOR VIEW MINI LATCH



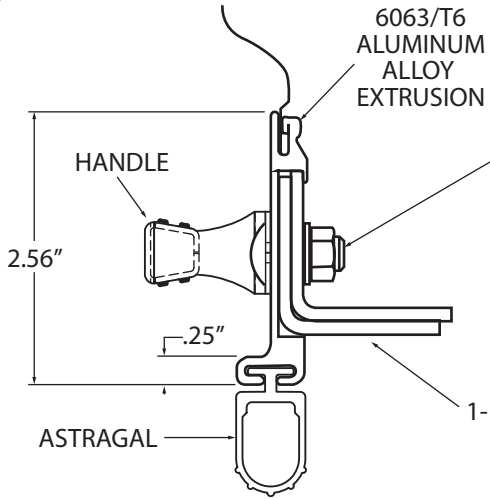
INSIDE DOOR VIEW MINI LATCH BACKER PLATE



BAKED POLYESTER WEATHERXL PAINT
TYPICAL PANEL (26 GA) DETAIL



MINI CATCH



BOTTOM BAR ASSEMBLY DETAIL

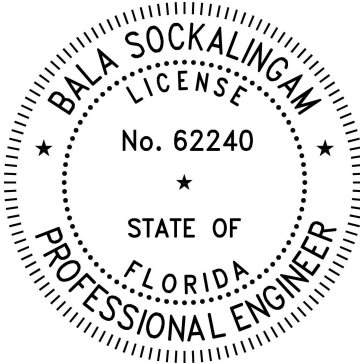
1/4" THRU CARRIAGE BOLTS W/LOCK NUTS, TWO BOLTS USED ON EACH HANDLE TWO HANDLES TYPICAL ONE BOLT AT OPPOSITE END OF ANGLE MINIMUM FIVE BOLTS

1-1/2" x 1-1/2" 14G STEEL ANGLE (x2)

| DOOR SCHEDULE | |
|---------------|-----------------------|
| DOOR WIDTH | DESIGN PRESSURE (PSF) |
| 8'4" | +37.0 -37.0 |
| = < 8'0" | +39.5 -39.5 |

This item has been digitally signed and sealed by Bala Sockalingam, PE, on the date indicated.

Printed copies of this document are not considered signed and sealed and this signature must be verified on any electronic copies.



WIND CLIPS- Starting in 1st valley above bottom bar, wind clips are installed in valleys 1,4,7,10,16,19, and 22. Valley 13 receives metal banding with wind clip on each end resulting in minimum of 2 wind clips per sheet on each side and 1 band (door width x 1"x .175"x) with a clip on each end. With additional sheets, 2 more clips will be added per side continuing the same pattern. (SEE METAL WIND CLIP 1 DRAWING)

UNLESS OTHERWISE SPECIFIED:

DIMENSIONS ARE IN INCHES
TOLERANCES:
FRACTIONAL $\pm 1/16"$
ANGLES: $\pm 3^\circ$
TWO PLACE DECIMAL ± 0.01
THREE PLACE DECIMAL ± 0.005

MATERIAL
26G Steel
FINISH
Coated

| | NAME | DATE |
|-----------|------|----------|
| DRAWN | KMN | 10/03/24 |
| CHECKED | | |
| ENG APPR. | | |
| MFG APPR. | | |
| Q.A. | | |
| COMMENTS: | | |



ROLL UP DOOR INC.
505 Main Street Blackshear, GA 31516
912-449-9352

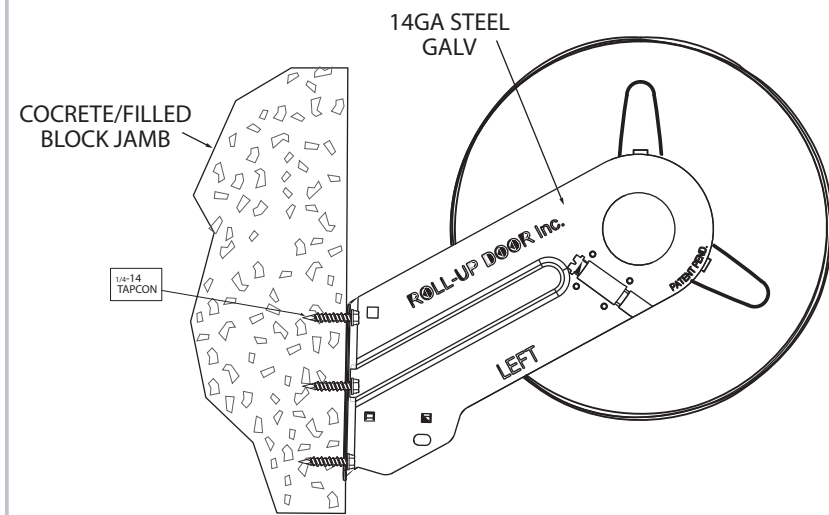
TITLE:
RDI SERIES 1000-WL
MAX. 8'-4" WIDE x MAX 10'-0" HIGH

| | | |
|------------------|----------------------|-----------------|
| SIZE A | DWG. NO. WRD-1001 | REV A |
|------------------|----------------------|-----------------|

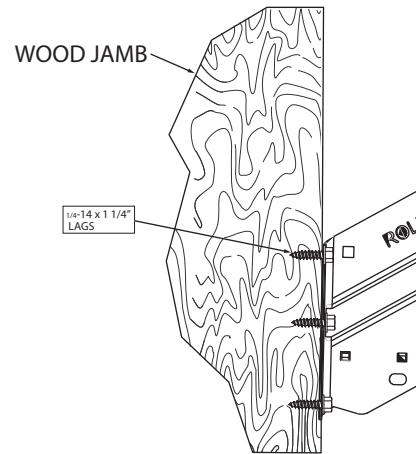
SHEET 1 OF 2

PROPRIETARY AND CONFIDENTIAL
THE INFORMATION CONTAINED IN THIS DRAWING IS THE SOLE PROPERTY OF ROLL UP DOOR INC. ANY REPRODUCTION IN PART OR AS A WHOLE WITHOUT THE WRITTEN PERMISSION OF ROLL UP DOOR INC. IS PROHIBITED.

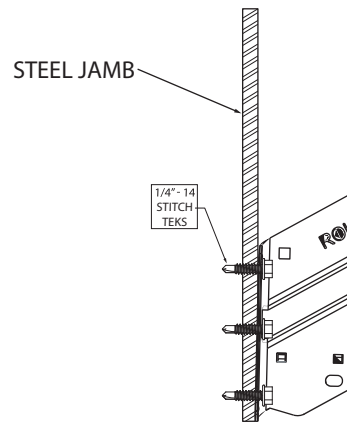
B



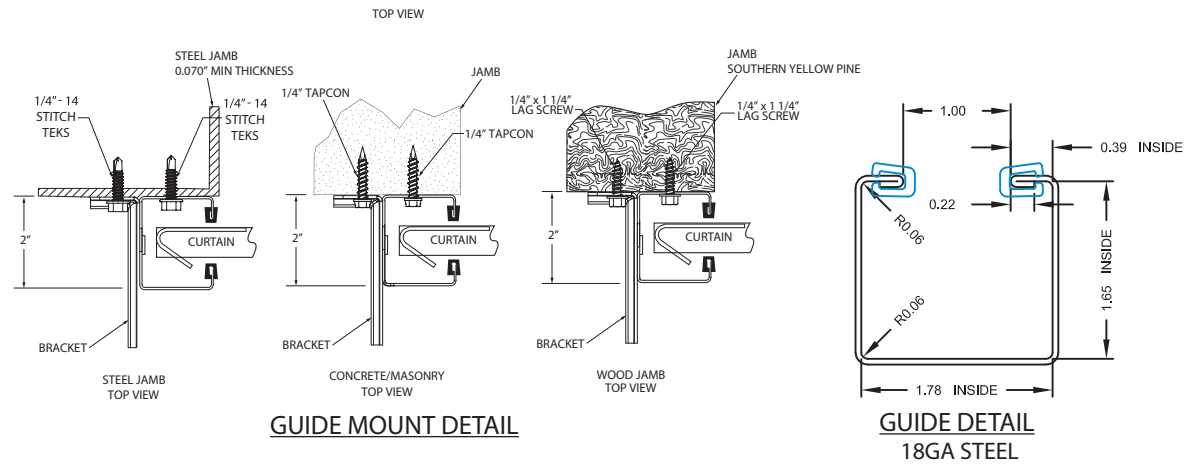
BRACKET MOUNTING TO MASONRY DETAIL



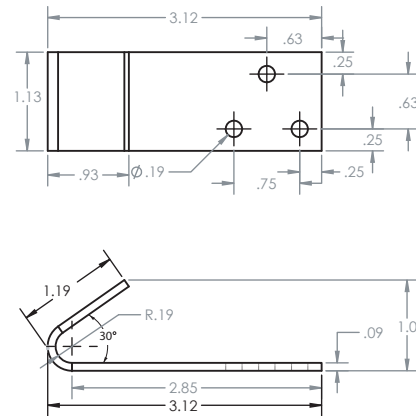
BRACKET MOUNTING TO WOOD DETAIL



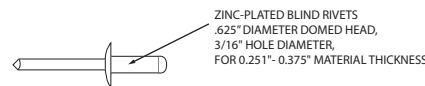
BRACKET MOUNTING TO STEEL DETAIL



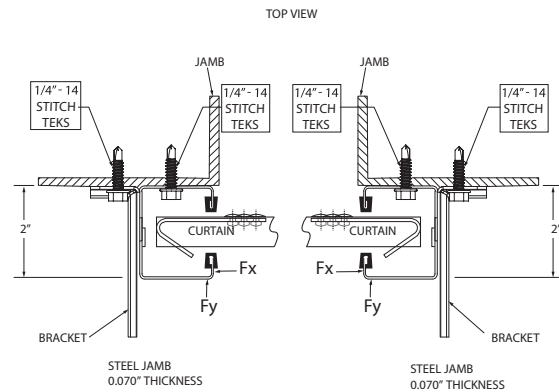
B



WINDCLIP



STEEL RIVET



RIGHT AND LEFT GUIDE MOUNT DETAIL LOAD DIAGRAM
MIN 0.070" STEEL JAM SHOWN

| SUPERIMPOSED WIND CLIP FORCES | | |
|-------------------------------|----------------|----------------|
| DOOR WIDTH | FORCE (PLF) | |
| | F _x | F _y |
| 8'4" | 294.8 | 159.2 |
| 8'0" | 265.3 | 158.0 |

A

PROPRIETARY AND CONFIDENTIAL
THE INFORMATION CONTAINED IN THIS DRAWING IS THE SOLE PROPERTY OF ROLL UP DOOR INC. ANY REPRODUCTION IN PART OR AS A WHOLE WITHOUT THE WRITTEN PERMISSION OF ROLL UP DOOR INC. IS PROHIBITED.

UNLESS OTHERWISE SPECIFIED:

DIMENSIONS ARE IN INCHES
TOLERANCES:
FRACTIONAL $\pm 1/16"$
ANGLES: $\pm 3^\circ$
TWO PLACE DECIMAL ± 0.01
THREE PLACE DECIMAL ± 0.005

MATERIAL
26G Steel

FINISH
Coated

DRAWN

CHECKED

ENG APPR.

MFG APPR.

Q.A.

COMMENTS:

NAME

KMN

DATE

4/21/22



ROLL UP DOOR INC.
505 Main Street Blackshear, GA 31516
912-449-9352

TITLE: RDI SERIES 1000-WL
MAX. 8'-4" WIDE x MAX 10'-0" HIGH

SIZE

A

DWG. NO.

WRD-1001

REV

A

SHEET 2 OF 2

A

2

1